

DIRECTORY EDITION

ISSUE 18 | July to Dec 2021

PENINSULA

Life

FREE
take me!



*Supporting
local*

liveplaygrow.com.au

NORTH BRISBANE • AUSTRALIA

YOUR FREE
DEDICATED PUBLICATION
FOR THE PENINSULA



K*the***OMO**

BOOK YOUR NEXT CORPORATE EVENT OR CONFERENCE AT THE KOMO

Excellent Conference spaces for meetings,
corporate workshops, AGM's, presentations and more.

We can host events anywhere from 5 people to 250 people!

Give our Events Team a call on 07 3284 6520
and let us see what we can do for you.

thekomo.com.au

99 Marine Parade, Redcliffe QLD 4020 / P 07 3284 6520

  thekomoredcliffe



Contents



06

OUR LOCAL
DIRECTORY



THE POWER OF THE SMILE



ACCOUNTING & LEGAL
DIRECTORY



CHILDCARE DIRECTORY



GKS LAW -
PARTNERING WITH YOU



EAT WELL DIRECTORY



SESAME LANE



DISCOVER THE TASTES OF
MORETON BAY



CELEBRATING 50 YEARS
GRACE LUTHERAN PRIMARY



ASTUTE - FINANCE.
INSURANCE. WEALTH.



GATHER TOGETHER AT
THE KOMO



NEVER A BETTER TIME
TO LOOK FOR WORK



RENAISSANCE IN AUSTRALIAN
MANUFACTURING



AGE CARE DIRECTORY



PORTER DAVIS
THE SAVOY

TASTES OF MORETON BAY

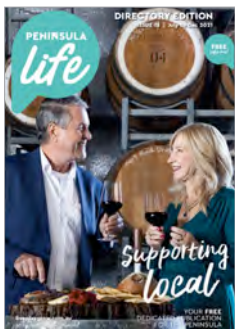
1 AUG - 19 SEPT 2021



25+ SIGNATURE EVENTS

Come with us on a six-week culinary journey of local produce, events, foodie trails, cellar door experiences, masterclasses and more.

DISCOVER THE PROGRAM
TASTESOFMORETONBAY.COM.AU



Cover image courtesy of
Tastesofmortonbay.com.au

Publication of
Peninsula Life (QLD) PTY LTD

ABN 30 623 498 680

35 Redcliffe Parade, Redcliffe
Peninsula, Queensland, 4020

info@liveplaygrow.com.au
liveplaygrow.com.au

Editor

Joshua Kindred
content@liveplaygrow.com.au

Content and Design

Amanda Morrison
content@liveplaygrow.com.au

Partnerships & Advertising

Daniel Lyngcoln
0410 100 151
info@liveplaygrow.com.au

Stockists

If you would like to stock
Peninsula Life, please email
info@peninsulalife.com.au

Print Partner

JT Press – Redcliffe

Peninsula Life is a free magazine dedicated to the Redcliffe Peninsula with a strong vision to encourage people to LIVE, PLAY and GROW in our region.

The Publisher and associated parties do not assume responsibility for, endorse or adopt the content of any advertisement or third-party contributor information published in Peninsula Life. Peninsula Life is intended to be a guide and reasonable care is taken in the preparation of the publication, however, the Publisher and other associated parties do not accept any liability for any errors or omissions the publication may contain.

Peninsula Life – Your free
dedicated publication for
the Peninsula

Stay connected
liveplaygrow.com.au



From the Editor



Our island nation status as a country, at least by way of geography has seen us approach the pandemic of Covid-19 very different to many other countries. There is no doubt last year there was unrelenting noise and clear sentiment from Aussies to manufacture and grow product in Australia, use "Australian Made".

As a country there is a lot to change in our purchasing behaviors, employment and training shortages that sees the sentiment of "Australian Made" a difficult feat to achieve. We at Peninsula Life know that it often takes a lot of small changes to make great change, so we've approached this edition with a local business approach.

It's amazing what you find if you're prepared to commit to looking in your backyard from tourism, food & beverage experience, tradespeople, manufacturing, fresh produce, education and health... the list goes on, and we've tried to capture as many stories of great businesses in our Peninsula region.

For your next function, your next purchase, your next experience, your next anything, consider can I do that here on the Peninsula? Cause if you make the effort, you'll surely make a difference to a local business, a business that employs locals, trains locals and creates the great community we love to Live, Play and Grow in.

Editor, Peninsula Life

Josh Kindred

OUR *Local* Directory

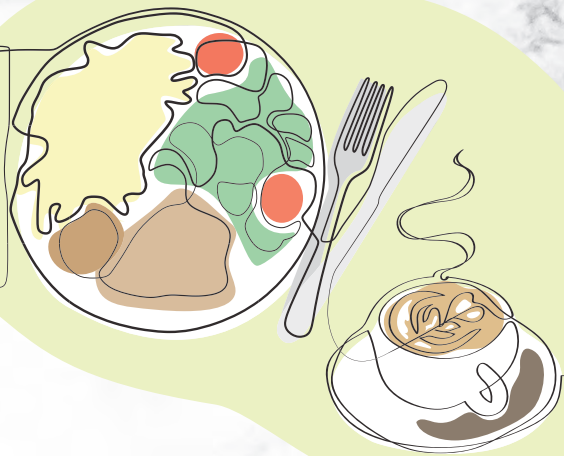
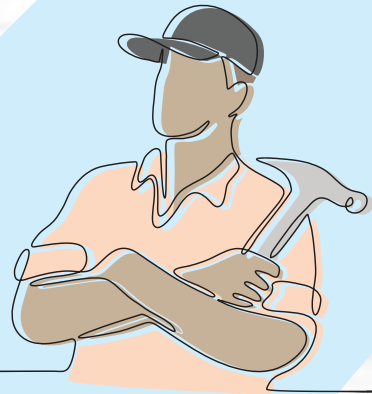
Peninsula Life is proud to present the Local Directory Edition – a place in Peninsula Life Magazine where you can locate great places to eat, drink, shop and find those great local services that help you, your family and your friends to **LIVE, PLAY** and **GROW**.

We're big fans of our local organisations and know you are too! Shopping local supports our community in so many different ways.



Childcare

Tradie



Eat well



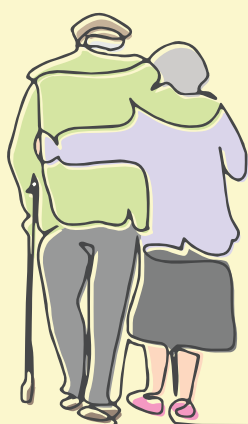
Call Mum ~
Book visit to
new home care
facility

DID YOU KNOW?



YOU CAN ALSO FIND
OUR LOCAL BUSINESS
DIRECTORY ONLINE?

Simply scan the QR code or head to
liveplaygrow.com.au/directory
to find the latest services and places to eat,
drink and shop on the Peninsula!



Aged care

Pet health



I WANT TO KNOW

more about Peninsula online?



THE APP

Peninsula Life is now available through Apple and Google Play.



Scan the QR code above to download from your app store.



SOCIAL MEDIA AND WEB

In addition to the web version of the app, Peninsula Life can be found at **liveplaygrow.com.au**, complete with local business directory!

Stay up to date across our social media pages **@liveplaygrow** on Facebook and Instagram.





I WANT TO KNOW

where to eat

Most venues on the Redcliffe Peninsula can cater to parties of all sizes, the trick is to plan your night out. Below are 3 tips to help you get started.

1. CONFIRM AVAILABILITY

In this time of uncertainty, restrictions always have the last say. But don't rely on Google to inform you of any last-minute changes. You can check the venue's website or social media for announcements, but a phone call is still the quickest way to avoid scrambling for mediocre alternatives when plan A doesn't pan out.

2. CHECK THE MENU

An ageing population in the area may mean that most venues won't offer many choices when it comes to diets driven largely by the younger generations (e.g., vegan, vegetarian, keto). If you follow a specific diet, do check out the menu beforehand to know your options.

3. BOOK A TAXI

Avoiding drink driving is key to having a good night out, but with the low demand for ridesharing around Redcliffe, access to an Uber ride is not always guaranteed. Instead, book a local taxi in advance to ensure you get home safely and on time.

DID YOU KNOW?

We have an online directory where you can find an even wider selection of local restaurants and cafes for you to try.



THE *Eat well* Directory



THE KOMO

📍 99 Marine Pde,
Redcliffe
☎ (07) 3284 6520
🌐 www.thekomo.com.au



THE BELVEDERE HOTEL

📍 Cnr Oxley Ave & Woodcliffe
Cres, Woody Point
☎ (07) 3284 2245
🌐 belvederehotel.com.au



SUNNY'S THE SEBEL

📍 1 McCulloch Ave,
Margate Beach
☎ (07) 3448 3400
🌐 sunnysmargatebeach.com.au



JAO KHUN RESTAURANT

📍 Shop 27/20 Anzac Ave,
Redcliffe
☎ (07) 3284 5934
🌐 jaokhunrestaurant.com.au



BOARDWALK CAFE - NORTH LAKES

📍 22 Lakefield Dr,
North Lakes
☎ (07) 3180 2888
🌐 northlakeshotel.com.au



FLOCK EATERY

📍 99A Redcliffe Pde,
Redcliffe
☎ (07) 3283 6647
🌐 flockeatery.com

GRIND

🌐 grindcoffeebars.com.au

DELICIA

🌐 deliciaacaibar.com

ARIALA

🌐 arialarestaurant.com

LITTLE LAMB

🌐 littlambrestaurant.com.au

CACTUS JACK'S

🌐 cactusjacks.com.au

THE GOLDEN OX

🌐 thegoldenox.com.au

CHARLIE'S RAW SQUEEZE

🌐 rawsqueeze.com.au

BELLA SICILIA PIZZERIA

🌐 bellasiciliamargat.com.au

CAPTAIN COOK TAVERN

🌐 captaincooktavern.com.au

SUTTONS BEACH PAVILION

🌐 suttonsbeachpavilion.com.au

BEARDY'S BAR & KITCHEN

🌐 beardysbarandkitchen.com.au

BUTCHER, BAKER COFFEEMAKER CAFE

🌐 butcherbakercoffeemaker.com.au

Over Six Delicious Weeks!

Discover the Tastes of Moreton Bay

When your seafood comes fresh from Moreton Bay, your cows graze in verdant Samford Valley, your vineyards grow atop the D'Aguiar Ranges and craft beer is in your blood.... it's no wonder the Moreton Bay Region is home to one of Australia's fastest-evolving foodie cultures.

That's why the region has dedicated a whole six weeks to celebrating and showcasing the Tastes of Moreton Bay, from August 1 to September 19, including the return of SEQ's tastiest event the annual Moreton Bay Food + Wine Festival.





WHAT TO EXPECT

Tastes of Moreton Bay will take visitors on a culinary journey with a rich diversity of unique local produce events and dining experiences, brewery tours, cooking schools, masterclasses and more, right across the region.

Moreton Bay Region Industry & Tourism (MBRIT) has partnered with Moreton Bay Regional Council alongside local producers and businesses, to cook up and serve a tantalising program for food fanatics, attracting some of the nation's most talented chefs to showcase our gastronomic offerings.

MBRIT Chairman Shane Newcombe said it had been a while between courses, but foodies wouldn't have to wait much longer for Tastes of Moreton Bay, with more than 25 events on the festival program, including the return of the Moreton Bay Food + Wine.



"Tastes of Moreton Bay is the chance for local tastemakers and foodies to come together. Venues and producers will be hosting culinary events and masterclasses and offering special menus and creating food trails and tours across the region, guaranteed to tantalise the tastebuds."



SEQ'S FOOD BOWL

This year will also see the return of the program's signature event the Moreton Bay Food + Wine Festival from 30 July until 1 August at Apex Park, Woody Point.

Mayor Peter Flannery said Moreton Bay deserved to be recognised as a food bowl for South East Queensland.

"This is my favourite time of year, when we proudly showcase the depth of talent and passion coming from our agricultural, fishing and culinary sectors,"

TICKETS ARE ON SALE NOW

To secure your tickets or to view Tastes of Moreton Bay program, visit tastesofmoretonbay.com.au



MORE INFORMATION -

TASTES OF MORETON BAY

August 1 – September 19
20+ events throughout Moreton Bay Region
tastesofmoretonbay.com.au





"Our subtropical climate offers a bounty of products from pineapples and raspberries to shellfish and wagyu products, and we have chefs daring enough to try truly exciting things."



"Best of all Moreton Bay is just minutes away from Brisbane, so get in your car to discover our amazing food trails and pioneering tastemakers."



"I implore locals to go discover a new corner of our region, the variety of products and hospitality stylings on offer from the cafes of Samford and hidden restaurants around Mount Mee to the iconic venues around Bribie and Redcliffe - there really is no better place to be."





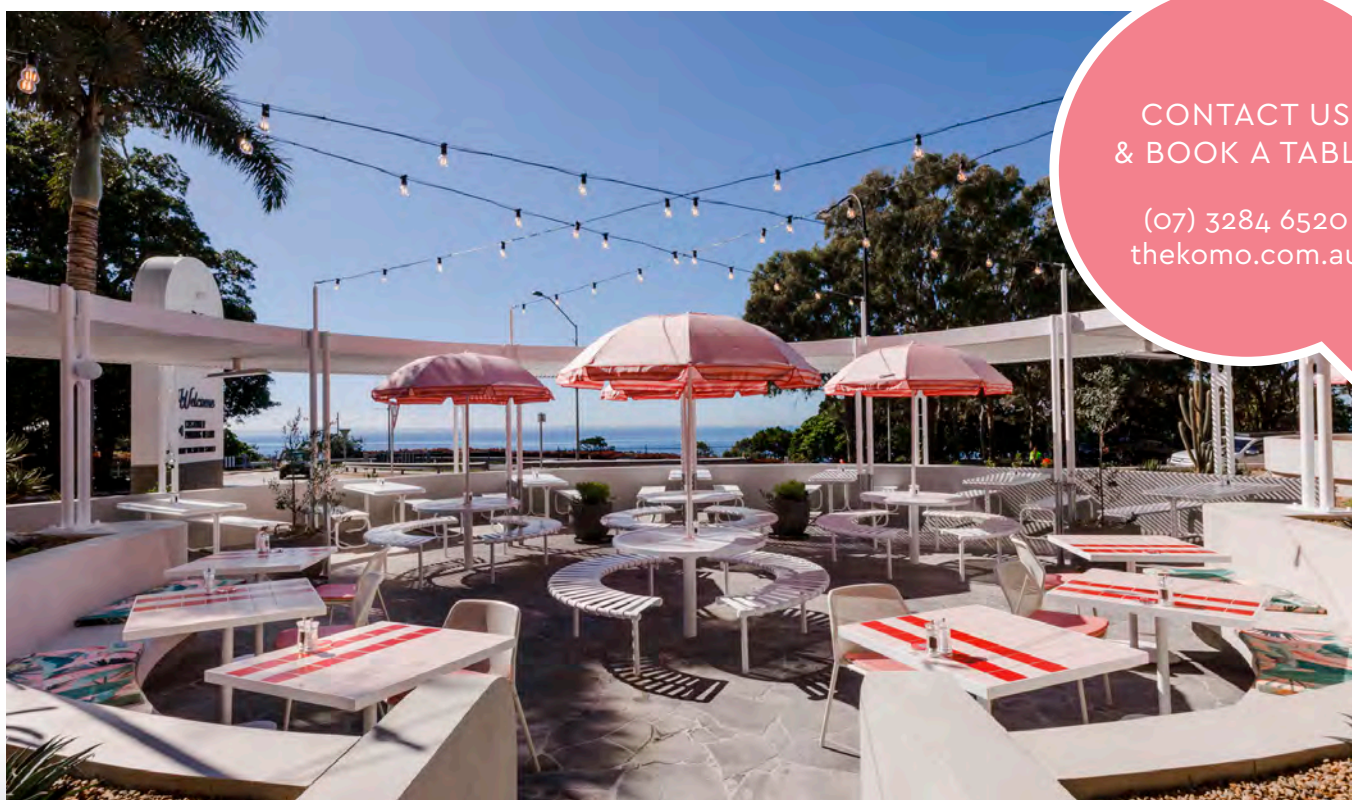
THE KOMO

Gather together at The Komo

Life was made for long summers filled with great tastes, refreshing drinks and friends taking in the fresh ocean air on the Terrace at The Komo.

So, grab a cocktail and take a seat beneath the pink umbrellas with friends or amongst family in one of the many dining booths.

Their menu features delicious Charcoal Rotisserie inspired dishes, packed full of zesty flavours and playful colours as well as some of the great pub classics.



CONTACT US
& BOOK A TABLE

(07) 3284 6520
thekomo.com.au

DID YOU KNOW?

The Komo has over 90 carparks available for customers! You can find our underground carpark entry via Suttons Street, just past Oaks Mon Komo reception.

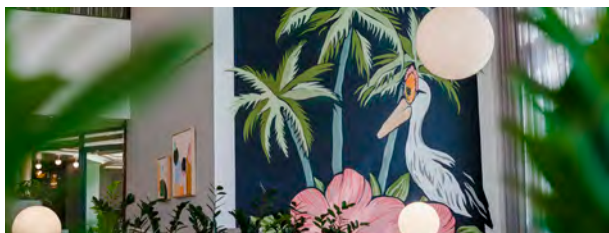
WHAT'S ON

Live music Friday 4pm – 8pm and Sunday 2pm – 5pm

Weekly members draw cash giveaway– Every Tuesday and Sunday 6.30pm in the gaming room. Must be present to win.



FOLLOW US ON FACEBOOK
TO KEEP UP WITH ALL OF OUR
EVENTS AND PROMOTIONS!



EVENTS

Make your next event one to remember!

Give our friendly Events Team a call on **07 3284 6520** to start planning now.

We've got beautiful outdoor terraces and decks, comfortable indoor dining booths, PLUS a 1st floor private function room that can hold up to 250 people!



CONFERENCES

With views of the water and the bustling atmosphere of the main bar and dining, our first floor conference centre presents itself as a unique space like no other.

Excellent Conference spaces for meetings, corporate workshops, AGM's, presentations and more.

We can host events anywhere from 5 people to 250 people!



FOOD

The Komo is the home of the Charcoal Rotisserie! All of our delicious meats are slow cooked on our charcoal rotisserie burners – even our brekky bacon!

Fresh seasonal food is the heart of what we offer here at The Komo. Our dishes are packed full of zesty flavours and colours to really compliment a beautiful sunny day by the water.

We're dog friendly here at the Komo, so bring your four-legged friend in for breakfast lunch or dinner.



DRINKS

We've got the view to compliment an icy cold beer, fresh glass of premium wine on tap or delicious cocktail here at The Komo!

Bringing a couple of friends in? Grab a cocktail balloon or beer tower to share.

Pop in and take a seat underneath the pink umbrellas in the sunshine, you cannot beat that view of Moreton Bay!



I WANT TO KNOW

about local retirement options

We all want the very best for the people that we love. Our loved ones are the most important people in our lives. They have worked hard to provide for us and they deserve the best care that is on offer to them.

As they enter old age, their needs may change. It may not be in their best interests to stay living in their own homes. Sometimes people need to move to a smaller space that is more manageable and offers a bit of extra care if they need it. In other cases, it may have become unsafe for a person to live at home due to dementia or the risk of falls. Sometimes loved ones just need a higher level of care than you are able to provide.

When this happens, you may be called in to help them decide on which aged care home best suits them. We have created this directory of some the aged care homes and support services available in the Peninsula to help you in your research.

DID YOU KNOW?

We have an online directory where you can find further aged care support services for your elderly loved ones.



THE Aged care Directory



BALLYCARA AGED CARE

📍 16B Oyster Point
Espl, Scarborough

☎ 1300 272 222

🌐 ballycara.com

BEAUMONT CARE

🌐 beaumontcare.com.au

AZURE BLUE RETIREMENT LIVING

🌐 azureblue.com.au

BLUE CARE NEW HAVEN RETIREMENT

🌐 bluecare.org.au

RIGHT AT HOME

🌐 rightathome.com.au

NATIONAL SENIORS REDCLIFFE

🌐 nationalseniorsredcliffe.
com.au

LODGES ON GEORGE

🌐 cpsmcare.com.au

HOME INSTEAD SENIOR CARE

🌐 homeinstead.com.au

OLDER WOMEN'S NETWORK QUEENSLAND

🌐 ownqld.org.au

PENINSULA GARDENS RETIREMENT ESTATE

🌐 peninsulagardens.net.au

AGED CARE AT WAIMARIE

🌐 ndiswaimarie.com

COOINDA HOUSE

🌐 metronorth.health.qld.
gov.au/community/
locations/cooinda-house

U3A REDCLIFFE

🌐 u3aredcliffe.org.au

WHY NOT GET OUT AND ABOUT?

For many senior citizens, the idea of watching the telly from the comfort of the couch may be more appealing than getting out and social. But if you knew that having an active social life could positively impact your health and longevity, you might think again.

If you're wondering how to reach out and connect, here are a few ideas:

- Get in touch with local community centres. You'll find that many offer outings for the elderly, game evenings and shopping trips.
- Join a hobby club such as a knitting circle or gardening club.
- Group classes such as hydrotherapy are particularly beneficial for senior citizens as you can socialise and get fit. Win-win!

Enjoy the very best of Peninsula living... BallyCara offers you a community, a lifestyle and happiness



- 14 hectare site 2 blocks back from the waterfront
- Wellness Centre with Gym, Coffee Bar and Pool
- Health Clinic including Remedial Massage and Podiatry
- Onsite Aged Care facilities
- 48 ft cruiser to enjoy cruises and fishing trips
- In Home Service
- Various styles of villas and apartments on offer
- Onsite Emergency Response team



I've just moments ago returned from a marvelous day on the bay and to Moreton Island. I just wanted to say how grateful I am to you all for making it happen. It was totally brilliant. An absolute tonic. I've taken a video so I can savor it again and again.

~ Peter, Resident, BallyCara Village of Friends



This whole huge change of lifestyle for me has been a most pleasant experience all round and I am forever grateful to the staff of BallyCara. I still can't believe my good fortune in finding this place.

~ Keri, Resident, BallyCara Village of Friends



For more information or to book a tour, call
BallyCara's Village Sales Specialist on 1300 272 222
www.ballycara.com



Inspiring Healthy & Happy Living

The Power of the Smile



Cafes, community and culture. Living in Redcliffe we have plenty of reasons to smile but did you know that when you turn your frown upside down you are also reaping the health benefits?

In fact, we can learn from the youngest members of our community. Some research tells us that children on average smile up to 400 times a day. The average adult? 20 times. Those really happy adults that we encounter they average 40-50 smiles a day.

Guillaume Duchenne was a French neurologist who studied smiling in the 1800's. His studies found that while the muscles which control the corners of the mouth can engage in smiling can be activated whenever we want. However, for the genuine smile the orbicularis oculi is engaged- this is the area around the eyes which we can't control. Therefore, when you see someone smiling with their eyes as well it is also known as the Duchenne smile.

So why do we smile? Despite thinking happiness may be the cue researchers have argued that the act of smiling is also based on our primal instincts. We smile when embarrassed, when we make mistakes and when we are walking along the esplanade and another walker smiles at us and says hello.

IN ORDER TO GET THAT GENUINE DUCHENNE SMILE GOING, THERE ARE SO MANY WAYS TO UP YOUR SMILE COUNT.

- Exercise releases the endorphins- as Elle Woods in Legally Blonde famously said "endorphins make you happy..."
- Start your day with a smile. Get the mouth engaged in a smile- you will activate the neurons and should start to notice your smile is contagious if you are out in public. It ties into that primal part of our brain where people want to be accepted as a part of a group. If we see someone smile, studies have shown we naturally follow suit.
- Smile whenever you think about it!
- Leave yourself little messages to remind yourself to smile- I have two notes on my desk- one from my gym manager that says, "You're a good person." I have another one I wrote one day after being super cranky- it says "Be Nice". Both make me smile and remind me not to dwell too long on things which steal my smile.

How does smiling impact your health though? The Duchenne smile causes your brain to release tiny molecules called neuropeptides. Neuropeptides reduce stress. Smiling also means we are releasing dopamine, serotonin and endorphins too. These endorphins can act as a mild pain reliever, whereas the serotonin is an antidepressant. Some studies have even suggested smiling can help us recover faster from stress and reduce our heart rate.

FUN SMILE FACTS:



The idea of World Smile Day was created by Harvey Ball, who also created the smiley face logo in 1963.



The first email smiley face was sent at 11:44 am on September 19, 1982.



Even artificially produced smiles have been shown to induce happiness.



Smiling while talking on the phone makes you sound friendly.

Unsurprisingly, locals here are never far from a smile so keep spreading the joy!

- Erin Andrews



I WANT TO KNOW

where my kids can learn, play & grow

3 Tips for choosing the right childcare centre

1. DO YOUR RESEARCH

Before you even step foot in a childcare centre, it's important to consider some of the following factors.

Location: Is it close to home, work or in-between?

Operating hours: Do these align with your schedule?

Standards: What's the quality rating? You can find out at www.acecqa.gov.au

2. BOOK A VISIT

Organise a visit for you, your partner and your child. A tour will give you an idea how the centre works, what the staff are like and how easily your child will fit in. These are some things to look out for during your tour.

Environment: Is it welcoming? Does it feel like a healthy space for your child's development? (Trust your gut instinct.)

Hygiene: Pay attention to the cleanliness of the centre's main areas, is it just untidy or is it dirty? There's a big difference.

Interaction: Do the staff look engaged and switched on.

Menu: Will your child's dietary needs be met?

3. ASK QUESTIONS

A great way to get all the information you need is to make a list of questions to take with you. Here's a few to get you started.

1. How will you cater for my child/children's individual needs?
2. How do you maintain consistency in staff to ensure my child feels secure in their attachments?
3. How do you communicate to parents about their child/children's progress in learning or other issues regarding their well being?

DID YOU KNOW?

We also have an online directory where you can find a broader selection of childcare facilities to consider.



THE Childcare Directory



SESAME LANE

📍 14 Locations

☎ (07) 3283 0011

🌐 sesamelane.com.au

BUMPER BEARS

🌐 bumperbears.com.au

WORLD OF
LEARNING

🌐 worldoflearning.com.au

GOODSTART
EARLY LEARNING

🌐 goodstart.org.au

BEEHIVE KINDY

🌐 beehivekindy.com.au

GREEN LEAVES
EARLY LEARNING

🌐 greenleaveselc.com.au

CREATIVE KIDS

🌐 creativekids.net.au

C&K FLORENCE
KINDERGARTEN &
PRESCHOOL

🌐 candk.asn.au/florence

KIDS CAPERS
CHILDCARE

🌐 caperschildcare.com.au/scarborough

KIDZ CASTLE

🌐 kidzcastle.com.au

LITTLE SCHOLARS
SCHOOL OF EARLY
LEARNING

🌐 mylittlescholars.com.au

MUELLER EARLY
LEARNING CENTRE

🌐 mueller.qld.edu.au/elc

MORETON DOWNS
EARLY EDUCATION
CENTRE

🌐 early-education.com.au

PLAY AND LEARN
CHILDCARE CENTRE

🌐 playandlearn.net.au

STORY HOUSE
EARLY LEARNING

🌐 www.shel.edu.au/story-house-deception-bay/

DAY ONE EARLY
LEARNING CENTRE

🌐 dayoneelc.com.au

JOIN THE REDCLIFFE PENINSULA FACEBOOK GROUP

This group is for the community to share news, seek advice and advertise events that are all relevant to The Redcliffe Peninsula & surrounding areas.

It's an excellent resource for requesting reviews on all the local childcare centres and a great place to meet other parents. You might even make some friends and organise play dates for the kids!





SESAME LANE

How their people *make the difference*

There are jobs, and then there are careers. The kind of work that adds up to something meaningful. It takes a special kind of person to dedicate their career to the education and care of children under 5, and a special kind of employer to support those people. Sesame Lane is that special kind of employer and their people have very big hearts. When you walk into a Sesame Lane centre, you can feel the wonder and magic of children at play.

BUT WHAT BRINGS THESE SPECIAL EDUCATORS AND TEACHERS TO SESAME LANE?

Sesame Lane are continuously looking at the strategic direction for employment to continue to offer both employees, families and children the very best standard of employment and care to grow from within.

They have established a new Early Education & Care Traineeship Program where each quarter they will hire a group of trainees who will work as additional staff to support each centre while they study.

Traditionally, trainees start while still at high school or soon after, but Sesame Lane have been seeking applications from a broad range of people with a common characteristic; a love of children and early learning.

The group of trainees ranges from Mums ready to re-enter the workforce, people seeking a career change, people looking to upskill into a rewarding career and they have seen applications from people who have struggled with the economic shift since Covid who need to re-evaluate their career options.



MAREE'S STORY

From Bank Area Manager to Early Childhood Educator; receiving a redundancy during Covid allowed Maree to change her mindset and take on the career of her dreams.

I worked for one of the Big 4 Banks for many years; I had a role that I loved, a team of people I enjoyed working with and a great boss. But due to Covid, everyone in my role at all branches of the bank was made redundant.

Being made redundant makes you almost feel like you're obsolete, and no one wants you anymore, so you have to get past that mindset.

I found myself faced with a choice; I had to decide whether I wanted to go back into banking and finance or refocus and do something completely different.

I decided to follow my dreams and I enrolled in a training program in Education support. My ex co-workers were surprised and a few even said to me "But that's not what you want to do is it?" So when I finished with the bank I applied for banking and finance roles, but I would always have a look for anything in education.

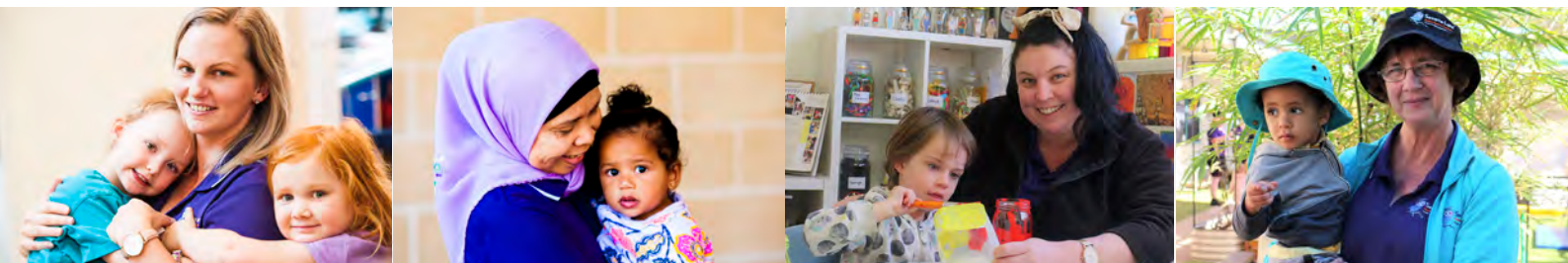
That's when I came across the Sesame Lane Traineeship program on seek.com. I honestly didn't think I would get a look-in, but I applied, and I was lucky enough to receive a call from Sesame Lane to come into the assessment centre. From that first day my experience in the Sesame Lane Traineeship Program has been fantastic, I am so impressed. I have received so much support and I am so grateful to Sesame Lane for giving me this opportunity.

My goal for when I finish my Certificate 111 in Early Childhood Services is to become a Lead Educator. In my role at the bank, training and teaching was my biggest strength, and I know that strength will carry over to Early Education. Every child is unique, they all learn differently. What is so rewarding for me about teaching both adults and children is that wow moment, when they work something out you've been teaching them.

I've been offered a banking job since starting the Sesame Lane Traineeship Program but I am enjoying it so much there's no way I'll ever look back! I'm looking forward to a rewarding career where I can make a difference in the lives of young children.



MEET MAREE



14 Exceptional Centres Across North Brisbane



SCAN ME

www.sesamelane.com.au

Celebrating 50 years at Grace Lutheran Primary School



This year has been a special year for Grace Lutheran Primary School as it celebrates its 50th anniversary.

Commencing in 1971 as a natural progression from Grace Lutheran Creche and Kindergarten, the school began with 15 children and a teacher in the Lutheran Church Hall at Woody Point.



Alongside her of course there were many important pioneers and the school has been blessed this year with a visit by Mrs Lyn Bateson (nee Hauser) the first teacher and Mr Bruno Matushka who was the first Principal who began his work at the school in 1972.

Pioneering schools are exciting places and due to its popularity, Grace Primary moved to its current location at Maine Road Clontarf in 1972 and the building commenced. Over the years, the school has grown and now has 400 students and over 50 staff attending each day.

A huge part of our program now involves an Out of School Hours Care facility which caters for 150 children each day.



The Kindred family were an important part of this beginning with Christopher being one of the first students and Mrs Juliann Kindred working closely with Pastor Joe Stolz to set up the new school.



As part of the history, in 1973, some students did not graduate to secondary school but stayed on the Clontarf site until Grace Lutheran College was begun in 1980.

It is wonderful to know that on the Redcliffe Peninsula over 2000 students attend Grace Kindy, Primary School or the College due to the dedication and tenacity of the pioneers back in the 1970s. They sought a top quality, caring Christian community and this is still in place even today as we begin our second 50 years of outstanding Primary School education at Grace Lutheran Primary School.



Celebrating 50 years

ENROL NOW

Co-education prep to year 6

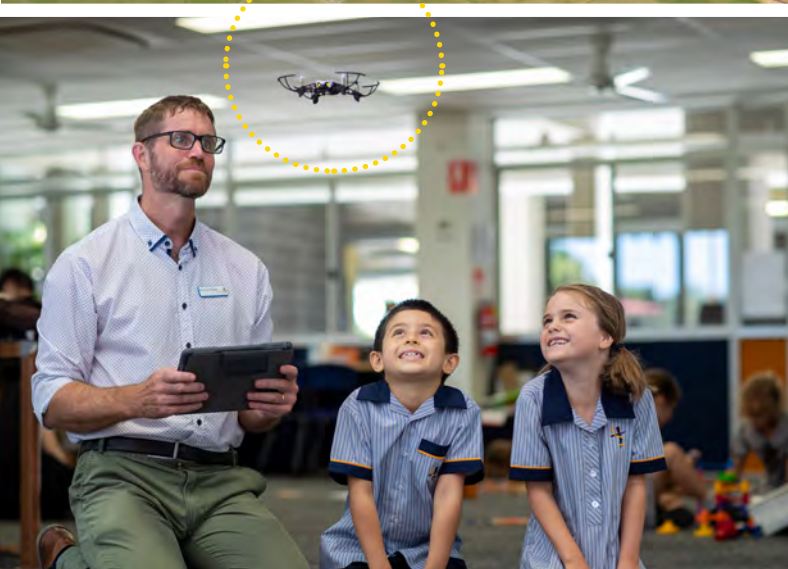
We are a vibrant Christian community who work hard to provide a quality educational environment for children.

Our students are offered STEM, Japanese, physical education including swimming and performing arts all from prep.

We have highly skilled tutors for our extensive extra curricular performing arts program. A range of dance troupes, acrobatics, vocal and instrumental lessons are all available at convenient times. Our books, stationery and camps are all inclusive in the fees and organised by the school.

We have access to Grace's private bus services which cover routes from Bribie Island to Narangba, North Lakes and Newport.

Book a tour today at the best little primary school in Redcliffe.



IF YOU'D LIKE TO LEARN MORE ABOUT GRACE PRIMARY, YOU CAN CONTACT THE ENROLMENTS OFFICER

Melissa Johnson (07) 3283 0011



enrol@glps.qld.edu.au
38 Maine Rd, Clontarf QLD 4019
www.graceprimary.qld.edu.au/

Never a better time to look for work

Luke Howarth MP

As Brisbane prepares to welcome the world in 2032 for the Olympics, we mark an important leap forward. The Summer Games promises infrastructure, economic growth and local benefits for years to come.

Local infrastructure projects like the Dolphins' federally funded Moreton Daily Stadium will create jobs, and hosting major sporting events will be a big win for local business.

North Lakes' Cornerstone Constructions is one of our local builders enjoying the benefits of the covid stimulus and the new residential and retail development project they are building for Keymax Property Group on Anzac Avenue, Mango Hill is set to create more than 100 jobs during its construction alone.

People can expect more road and infrastructure upgrades like the Bruce Highway Upgrades and Deception Bay Interchange as part of the 11-year Olympic framework.

If you are looking for work, there has never been a better time to find it.

I spend a lot of time in my electorate of Petrie chatting to employers and job seekers alike. Employers like Temper Troops Air Conditioning and Electrical in Burpengary East, who sell Australian-made, reverse-cycle air conditioning systems. They need refrigeration mechanics and electricians, right now.


The federal government is investing in the skills and training for the future Australian workforce like never before.



There are more than 38,000 apprentices and trainees in the vocational education pathway in Petrie alone. The continued development of the Petrie USC campus as an innovation hub will help our modern manufacturing and ingenuity future.

The June jobs figures are the best they've been for decades, 4.9% unemployment and 10.2% for youth, and we will continue our strategies to keep the momentum going.

If we can continue to empower local employers so they are confident to expand and hire new employees and also keep encouraging people to get the skills they need to be productive employees, then everyone wins in this space.



"If you are looking for work, there has never been a better time to find it."

Just like our local Olympic heroes Teagan Micah and Paul Adams – the biggest sporting event in the world offers hope to any young Australian who dares to dream big. Hope is the promise of our young people reaching their full potential. They are our future.

I really urge young job seekers looking for their first foot in the door, along with anyone seeking a change, to keep an eye out for the upcoming Brisbane North Jobs Fairs.

There will be job opportunities in manufacturing, transport and logistics, government and defence, mining and health care, to name a few.

No matter where you are in your career, you'll find the information you need at these fairs.

We want you to succeed, and we want you to pursue your dreams.

Get in touch with my office on **3284 8008** for more information.



I WANT TO KNOW

who can help me with my tax

Excited as we may be about getting a much-welcomed tax refund at the end of the financial year, the tedious process of making this happen is enough to make anyone recoil. Below are three top tips to make your tax time easier:

1. HIRE AN ACCOUNTANT

You may think that a quick Google on how to do your tax will suffice, but an accountant who's up to date on tax laws and takes your personal situation into consideration, can be a sound investment.

2. BE PREPARED

Before attending an appointment with your accountant, be prepared. By doing this, you can help your accountant to identify relevant claimable expenses that could be easily overlooked. Bring paperwork, receipts and anything else that may be useful in answering any questions they may have.

3. THINK OUTSIDE THE "WORK" BOX

Work-related expenses are not the only avenue from which you can make claims. There may be also others to consider such as working from home expenses, personal super contributions, charity donations, accounting fees, etc.....

Disclaimer: This content is general advice only and does not consider your personal circumstances or needs. It does not constitute financial or taxation advice and should not be relied upon as such.

DID YOU KNOW?

We have an online directory where you can find an extensive selection of local Accounting and Legal services.



THE Accounting & Legal Directory

**GOOD LIFE
ACCOUNTING**

**GOOD LIFE
ACCOUNTING**

Shop 8 Comino's
Arcade, 133 Redcliffe
Pde, Redcliffe
0433 877 007
petersobczuk.com.au

GKS | LAW
PARTNERING WITH YOU

GKS LAW

19 Creek St,
Redcliffe
1800 GKSLAW
gkslaw.com.au

**rb
lawyers**

RB LAWYERS

298 Oxley Ave,
Margate
(07) 3883 3700
rblawyers.com.au

ASTUTE
FINANCE | INSURANCE | WEALTH

ASTUTE

Level 7, 39 Sherwood
Rd, Toowong
(07) 3311 1599
astutefinancial.com.au

**INVISION
BOOKKEEPING**

invisionbookkeeping.
com.au

**LIDDY KENNELLY
ACCOUNTANTS**

liddyk.com.au

ACCOUNTPLAN

accountplan.com.au

**STEWART BURR AND
MAYR LAWYERS**

sbmlawyers.com.au

QTAX CLONTARF

q-tax.com.au

**TEAM
ACCOUNTING**

teamaccounting.com.au

**TOTAL ADVICE
PARTNERS**

totaladvice.com.au

**EMERGE ADVISORY
PTY LTD**

emergeadvisory.com.au

**SHOEBOX
BOOKKEEPING**

shoeboxbooks.com.au

**TOTAL ADVICE
PARTNERS**

totaladvice.com.au

TIPS FOR CHOOSING THE RIGHT LAWYER FOR YOU

These are some of the things you should consider to make sure your lawyer has the right skills, experience and personal qualities to meet your needs:

1. Determine what kind of lawyer you need. Lawyers generally specialise in certain fields (for example criminal law, employment law, family law).
2. Compile a list of lawyers and then review by looking at their website, reading any reviews on google and facebook.
3. Once you have a short-list, call first to find out if they're available and then book a time to meet with them! Take relevant documents to the meeting and ask questions, choose a lawyer you feel comfortable with.

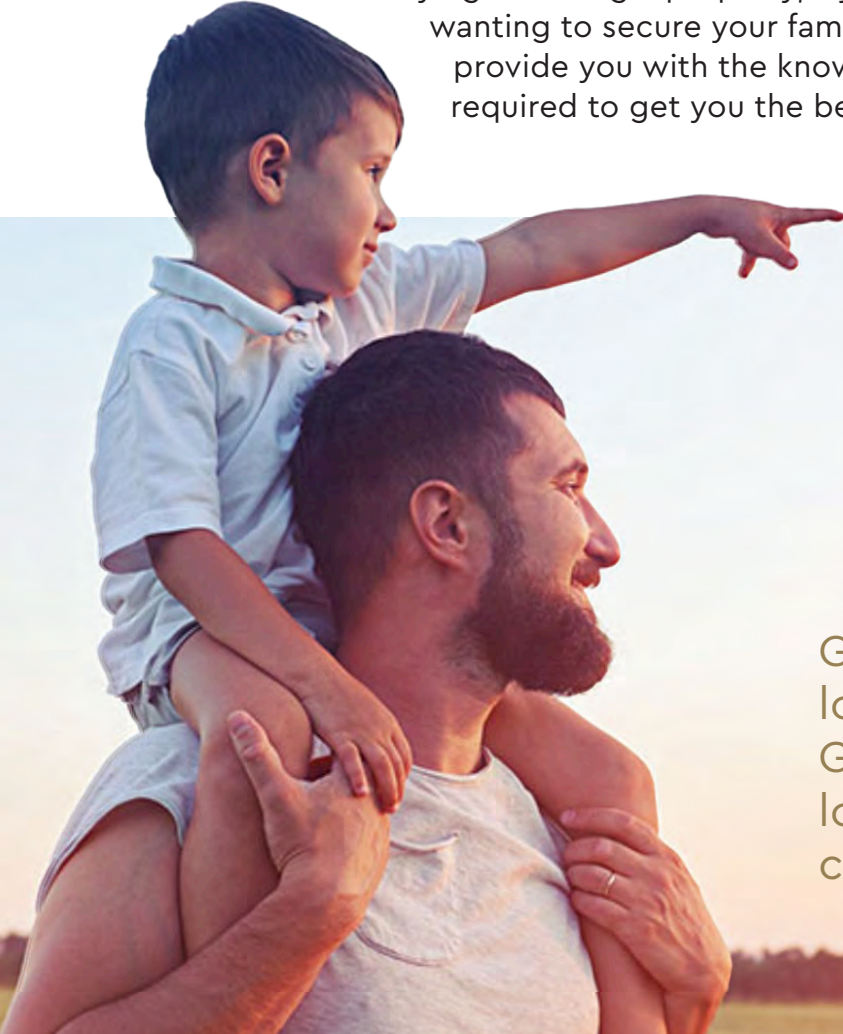
GKS LAW

Partnering with you *to secure your future*

GKS Law is one of the largest independent legal firms north of Brisbane, providing tailored legal services in the following areas:

- Compensation Law
- Commercial & Property Law
- Conveyancing
- Wills & Estates

GKS Law has been based on the peninsula for the last 20 years and bring a wealth of local knowledge and experience to their clients. Whether you are buying or selling a property, injured and can't work or wanting to secure your family's future, GKS Law can provide you with the knowledge and expertise that's required to get you the best result.



GKS Law has three locations in Queensland. Get in touch with your local office to see how we can partner with you.



COMPENSATION LAW

Michael Klein and Kane Stegeman head up our Compensation Law team. Both Michael and Kane bring a wealth of experience and knowledge to a complex and difficult legal field. Michael and Kane understand that this can be a particularly traumatic time in people's lives. Their goal is to help you navigate this traumatic time and ensure you receive the compensation you deserve.

Both Michael and Kane are committed to building relationships with their clients. Their advice is clear and communicated in such a way that takes complex legal matters and simplifies them into understandable and realistic options for their clients. They pride themselves on their ability to deliver to their clients and their work ethic matches this ability.



CONVEYANCING

Selling or purchasing a home can be a quite a stressful time in people's lives. Many people will only ever go through these processes a couple of times throughout their lives. The legislation and complexity around conveyancing in Queensland has increased exponentially and that is why it is critical to have an experienced conveyancing team to guide you through your sale or purchase.

Our conveyancing team is managed by Rachel Wernicke and overseen by our property law team. The team is here to provide you with guidance and confidence that your property transaction not only runs as smoothly as possible but that your rights are protected.



WILLS & ESTATES

Our Wills and Estates team is led by our Managing Director Jodie Anderson-Bell. One of the areas that Jodie is passionate about is Estate Planning because it is so important to put plans in place to ensure your family's financial future.

Over the years, many clients have expressed their concerns about the real risk of their children going through a marriage or a relationship breakdown which exposes that child's inheritance to a family law settlement. One form of protection currently available to parents is the establishment of a testamentary discretionary trust. A testamentary trust places the assets from an estate into a Trust, that is then distributed by the trustee to the beneficiary. This differs from a standard will which leaves assets directly to the beneficiary. The trust is created in the Will but it remains dormant until the Will maker dies. The key benefits of a Testamentary Trust are:

- Flexibility of distributions
- Protection from Creditors
- Protection from Relationship breakdown
- Unique taxation concessions

Jodie and our Wills & Estates team can provide tailored advice and guidance on all aspects of estate planning including setting up a testamentary trust.

CONTACT US

T: 07 3284 5093

F: 07 3283 1367

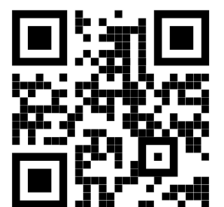
E: mail@gkslaw.com.au

Our offices operate
Monday to Friday,
8:30am to 5pm.

1800 GKSLAW | gkslaw.com.au

COMPENSATION | COMMERCIAL | CONVEYANCING | WILLS & ESTATE

REDCLIFFE | NORTH LAKES | SUNSHINE COAST





**A trusted finance manager
for Simple solutions,
Straight up.**

Award-winning specialist in:

- Home loans
- Construction loans
- Refinance



Tony & his team bring a wealth of experience and knowledge of the Peninsula. Whether you're a first home buyer or a seasoned investor contact us today to know how we can help you achieve your goals.



TONY DUNCAN,
Senior Broker



0413 782 416

www.astute.online

Astute Financial Management Pty Ltd | ABN 59 095 587 010 |
Australian Credit Licence 364253

ASTUTE

Finance. Insurance. Wealth.

Life on the beautiful Redcliffe Peninsula is unique and if you've decided to invest in this special part of the world, consider using a mortgage broker who knows the area well.

Tony and his team have been securing mortgage's for their clients for over 17 years and you'll be hard pressed to find a broker with more knowledge and understanding of the local lending market. With over 60% of mortgage applications being processed by mortgage brokers these days (AMA, 2021), having one of Brisbane's leading experts by your side could make all the difference to when it comes time to secure your next property.



Aerial view of Houghton Bridges connecting the Redcliffe Peninsula.

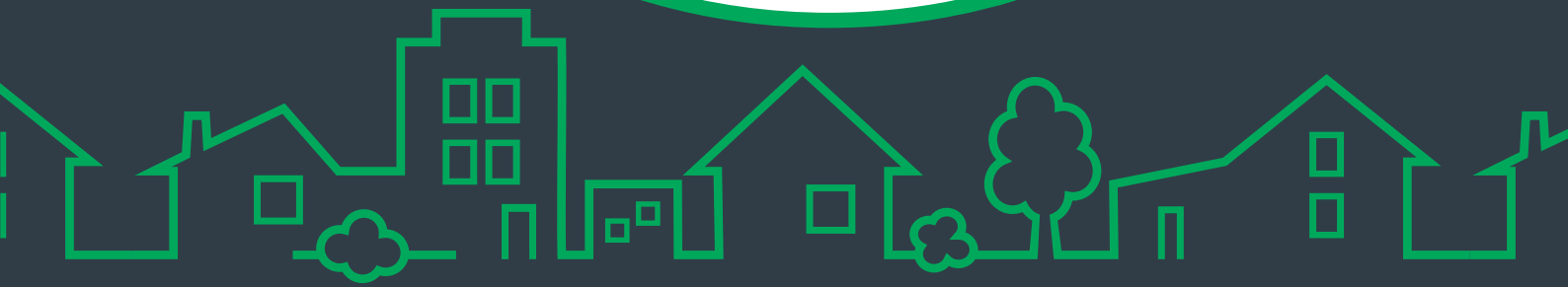
"I have been dealing with Tony and his team for over 20 years – they are the best in the business. If customer service is high on your list of priorities then you simply cannot go wrong with Astute. Let them remove the stress of dealing with the banks for you!"

B. Mellino,stage.



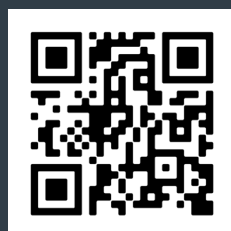
Has your **property value** changed?

Scan the QR code for a
FREE digital property
appraisal!



Find your home's value **Qlick** & easy

Industry leading research into Australian residential properties



www.qlick.com.au



I WANT TO KNOW

where to get active

Some days it can be difficult to stay motivated and stay active. After a hard day's work, it's easy to spend the evenings on the couch binge-watching 'The Office' while chowing down on your favourite takeaway.

Lucky for you the Peninsula has a diverse range of gyms, sports clubs and recreational activities to get your heart pumping. Whether you prefer an early morning workout, a yoga class to unwind, or a kick-ass martial arts class, there's something for everyone.

Why not sign the kids up to one of the local sports clubs? Tennis, Baseball, Netball, Soccer or Footy, they're all great ways to keep them active, learn new skills and make friends.

Staying active may not be your first priority, but in the long run, it's a much better option than staying inside all the time.

DID YOU KNOW?

We have an online directory where you can find an even wider selection of sports and recreational facilities to keep you active!



THE *Fit and active* Directory



ZEN-CHI NATURAL THERAPIES

North Lakes Evergreen
Centre Shop 11, 12-18
Discovery Dr
(07) 3482 2549
zen-chi.net.au



THE ACTIVE SISTERS

28 Baynes St,
Margate
0434 032 166
theactivesisters.com



REDCLIFFE TENNIS CENTRE

Cnr Oxley Ave &
Portwood St
(07) 3284 2349
focustennisacademy.com.au



EON THE FACTORY

Tennis Performance
Training Centre, King St &
Isobel St, Clontarf
0415 733 785
eonthefactory.com



REDCLIFFE TIGERS

Sports Ground, 30
Nathan Rd, Kippa-Ring
0458 212 761
redcliffetigers.com.au



BODY REFORMERS

207/113 Landsborough
Ave, Scarborough
0420 733 676
bodyreformers.com.au

CLUBLIME REDCLIFFE

clublime.com.au

F45 REDCLIFFE

f45training.com.au/
redcliffe

PENINSULA POWER FOOTBALL CLUB

peninsulapower.com.au

BROZ MARTIAL ARTS

brozmartialarts.com.au

REDCLIFFE CITY PHYSIE

redcliffecityphysie.com

GKR KARATE DECEPTION BAY

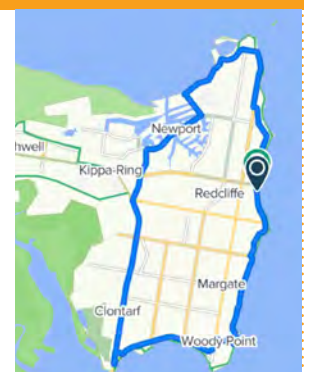
gkrkarate.com

WHY NOT TAKE A SCENIC BIKE RIDE ?

Redcliffe has always been a popular cycling destination for those in South-East Queensland. With the beautiful scenery, the smell of the ocean & great cyclepaths there's no wonder why!

This loop goes around Scarborough, Woody Point, Clontarf & Kippa-ring & is a popular training route for cyclists. Due to the low elevation this is also a great route for beginners or those looking to stretch the legs.

Information sourced from bq.org.au/where-to-rides/redcliffe-peninsula/





I WANT TO KNOW

about caring for my pets

As a pet parent you want to do everything you can to care for your fur child.

Responsible pet ownership starts with regular visits to the veterinarian. Given their shorter-than-human lifespan, your dog or cat should be getting a check up at least once or twice a year.

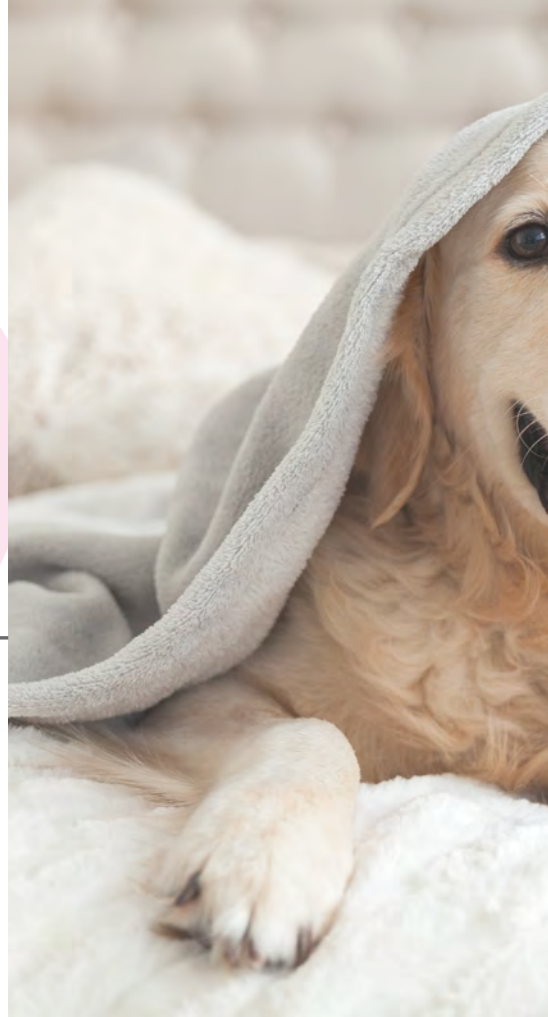
Depending on your pet's vaccination schedule, they may go more frequently when they're young, but establishing and maintaining good pet health means keeping up with vet visits as they age.

Knowing your pet's normal behavior is very important; if they are sick or injured, they will often act unusually, such as sleeping more, disinterested in their food, etc. If they begin to act oddly, check them for any injuries and keep an eye on their food and water intake.

If in doubt, it's probably time for a trip to the vet.

DID YOU KNOW?

We have an online directory where you can find an even wider selection of local businesses supporting the health and wellbeing of your pet.





THE Pet health Directory



ZACH'S PET SHOP

📍 Online only
☎ (07) 3154 6464
🌐 zachspetshop.com.au

PENINSULA VETERINARY SURGERY

🌐 peninsulavet.com.au

PET CAFE

🌐 petcafe.com.au

PENINSULA PET FOOD

🌐 peninsulapetfood.com.au

VETWELL

🌐 vetwell.com.au

PSYCHOLOGY & ANIMAL ASSISTED WELLBEING

🌐 paaw.com.au

PETS IN PEACE

🌐 petsinpeace.com.au

WASH WORX DOG WASH

🌐 washworx.com.au

PERFECT POOCHES

🌐 perfectpooches.com.au

GREENCROSS VETS

🌐 greencrossvets.com.au

REDCLIFFE DOG BEACHES

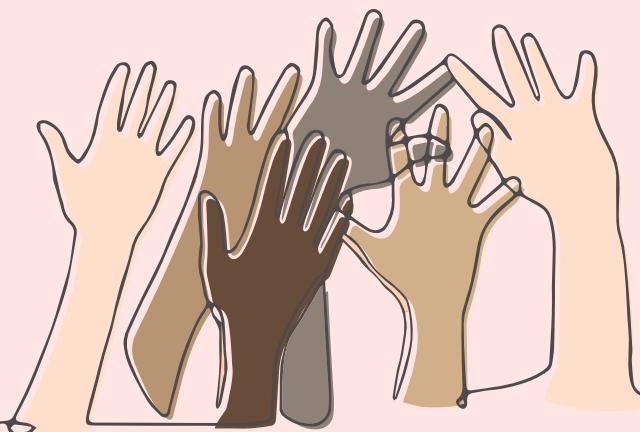
There are some great options for taking your dog for a walk on the leash in Redcliffe. Try any beach between the Houghton Highway and Woody Point Jetty, Clontarf and Woody Point, and any beach between Jamieson Park and Endeavour Park, Scarborough.

The only off-leash Redcliffe dog beach on the peninsula is Queens Beach. This beach becomes an off-leash beach before 8am and after 4pm daily (as part of a trial period). The off-leash area is found between Drury Point (Kennedy Esplanade) and Osbourne Point (Flinders Lane).

TIPS FOR OWNERS AT DOG PARKS AND BEACHES

- Dogs must be kept under effective control at all times.
- Owners are to remove dog waste.
- Be considerate of others when exercising your dog.
- Dogs are prohibited from conservation parks, reserves and foreshores unless designated as dog exercise areas.

Information sourced from visitmoretonbayregion.com.au and moretonbay.qld.gov.au



I WANT TO KNOW

how to get involved in my community

Getting involved in your local community is beneficial for everyone! Not only will you gain a sense of satisfaction and connection, but participating in community programs, local events, or neighbourhood initiatives will be a great opportunity to meet like-minded, passionate individuals. Socialising and interacting with other people, will help keep your brain and body active, not to mention the possibility of honing and growing new skill sets. Don't know where to start? Here's our top 3 tips!

1. JOIN LOCAL SOCIAL MEDIA GROUPS

Social media groups on Facebook or Instagram have become a popular source of local information for both newcomers and old-timers alike. Want to know the best place to grab a coffee in town, report a lost dog, or just find out what's happening in your street...why not turn to your co-citizens to get the scoop.

2. SUPPORT YOUR LOCAL BUSINESSES

Shopping locally is a great way to be a part of and also help your local community. It allows you to make long-lasting, meaningful connections with vendors while personally investing in the long-term success of your city. The more support we give to our local, grassroots businesses, the more our community thrives.

3. VOLUNTEER FOR A LOCAL NOT FOR PROFIT ORGANISATION

Be the change you want to see in the world, check out – www.volunteeringqld.org.au/services/find-a-volunteer-role – Whichever opportunity you choose, you'll be strengthening communities and enriching your personal and professional development.

DID YOU KNOW?

We have an online directory where you can find a larger collection of local community services to get involved in.



THE Community services Directory



REDCLIFFE PENINSULA
COMMUNITY FB GROUP



MATCHWORKS

27 Redcliffe Pde,
Redcliffe
(07) 3060 2009
matchworks.com.au



TRIBE SOCIAL
BELONGING

155 Sutton St,
Redcliffe
0422 232 437
tribebelonging.com.au



MYLESTONES
EMPLOYMENT

2/106a Sutton St,
Redcliffe
(07) 5499 3379
mylestones.org.au



PCYC

170 Klingner Rd,
Kippa-Ring
(07) 3385 1900
pcyc.org.au



HEADSPACE
REDCLIFFE

Units 5-7, 457 Oxley
Ave, Redcliffe
(07) 3897 1897
headspace.org.au



TURSA

198 Anzac Ave,
Kippa-Ring
(07) 3284 3304
tursa.com.au



ENCIRCLE

1 Lamington Dr,
Redcliffe
(07) 3284 3081
encircle.org.au



REDCLIFFE PENINSULA
SURF LIFE SAVING CLUB

35 Redcliffe Pde
Redcliffe, QLD
(07) 3284 4105
redcliffeslsc.com.au



THE COMPASSIONATE
FRIENDS

St Anne's Church Hall,
Scarborough
0419 693 195
compassionatefriends
qld.org.au



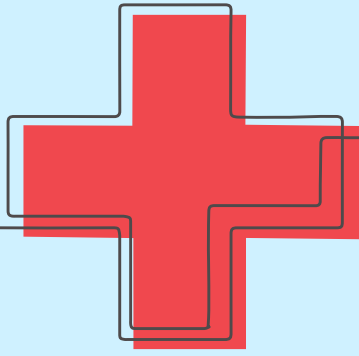
REDCLIFFE YOUTH
SPACE

Cnr of Anzac Ave &
Oxley Ave, Redcliffe
(07) 3283 8769
redcliffeyouthspace.org



BREAKAWAY

28 - 30 Bell St,
Clontarf
(07) 3883 1099
breakawayinc.info



I WANT TO KNOW

how to respond in an emergency

WHEN DO I CALL 000?

- For all emergencies including Police, Fire, and Ambulance
- For urgent Police attendance
- Where life or property is threatened or in danger

WHEN DO I CALL 131 444?

- For non urgent Police attendance
- To have a police report obtained for offences committed against yourself
- For all other police inquiries not of an urgent nature.

WHEN DO I CALL 1800 333 000?

- To report suspicious behaviour or activity (Non urgent)
- To report persons believed to have committed an offence
- To supply information which may lead to the arrest of an offender





THE Emergency services Directory



KIPPA-RING FIRE AND RESCUE STATION

📍 66 Boardman Rd,
Kippa-Ring
☎ (07) 3384 2900
🌐 qfes.qld.gov.au



REDCLIFFE AMBULANCE STATION

📍 52 Sydney St,
Redcliffe
☎ (07) 3635 1800
🌐 ambulance.qld.gov.au



MARGATE NEIGHBORHOOD POLICE BEAT

📍 213 Oxley Ave,
Margate
☎ (07) 3384 2022
🌐 mypolice.qld.gov.au



REDCLIFFE POLICE STATION

📍 Redcliffe Police
Station, Klingner Rd
☎ (07) 3283 0555
🌐 police.qld.gov.au



REDCLIFFE POLICE BEAT SHOPFRONT

📍 272 Anzac Ave,
Kippa-Ring
☎ (07) 3883 3067
🌐 police.qld.gov.au



STORM & FLOOD EMERGENCIES

📍 Moreton Bay
State Emergency
Services
☎ 132 500
🌐 [132500.qld.gov.au/
ses-webapp](http://132500.qld.gov.au/ses-webapp)



REDCLIFFE EMERGENCY DEPARTMENT

📍 108 Anzac Rd,
Redcliffe
☎ (07) 3883 7777
🌐 [metronorth.health.qld.
gov.au/redcliffe/](http://metronorth.health.qld.gov.au/redcliffe/)



DECEPTION BAY FIRE STATION

📍 26 Endeavour St,
Deception Bay
☎ (07) 3204 2513
🌐 www.qfes.qld.gov.au



CRIME STOPPERS

☎ 1800 333 000
🌐 crimestoppersqld.com.au

WOULD YOU SURVIVE A FIRE IN YOUR HOME?

A house fire can move fast and fill a house with toxic smoke, so having working smoke alarms and a well-practised fire escape plan will save lives.

Follow these three simple steps to protect your household

1

CHECK

That your smoke
alarms work

2

CREATE

A home fire
escape plan

3

PRACTISE

So everyone
knows their role

Renaissance in Australian Manufacturing

Luke Howarth MP

While the tyranny of distance poses challenges in the global trading space, it has been our saving grace when it comes to protecting lives during this COVID-19 time. We closed our international border early and have turned our mind to helping Australian businesses be more self-sufficient and competitive. Australia has a long and proud history of manufacturing, but this pandemic has highlighted the vulnerability of Australia's supply lines, and trade tensions with China have made business difficult for some Australian exporters.

The Australian government is working to reverse the dependence on manufactured goods from overseas and is building strategies that support Australia's economic sovereignty in a post COVID-19 world.

The new era will take time to build momentum but the \$1.5 billion Modern Manufacturing Strategy, with science and technology as the central pillar, around the Resources Technology and Critical Minerals, the Medical Products and Space, Food and Beverage, Recycling and Clean Energy, and Defence sectors will help to build our sovereign capability in these critically important sectors and create new opportunities and jobs for Australians.

"Clontarf's Quality Plastic Products is working with recycled materials to replace garden and nursery pots with Aussie-made ones."





The Petrie electorate is home to some exciting high-tech manufacturers that are delivering big rewards for our local economy.

Clontarf's Quality Plastic Products

is working with recycled materials to replace garden and nursery pots with Aussie-made ones.

Reid Print Technologies

is producing high-tech, printed, sensor technology printed onto flexible plastics like those used by Tritium for electric vehicle charging stations.

Tubeworx

is a specialist manufacturer in tubes and hoses for automotive, hydraulics, defence, construction, mining and marine industries.

Family-owned Packer Leather

at the Narangba Innovation Precinct is manufacturing our world-famous kangaroo leather RM Williams boots.

Compella Compression

at Mango Hill has developed an innovative gas compressor for coal seam gas operations that will potentially eliminate the need for fracking to extract gas from low-flow wells.

We will continue delivering projects that offer big rewards for our local economies, build our sovereign capability and create new jobs.

"Australia has a long and proud history of manufacturing, but this pandemic has highlighted the vulnerability of Australia's supply lines."





I WANT TO KNOW

where to find a reliable tradie

You can prevent a lot of unnecessary hassles when it comes to hiring tradespeople, by taking the time to exercise due diligence upfront. Here's some key tips to make things run a whole lot smoother:

1. MAKE SURE THEY'RE QUALIFIED

Choose a contractor that is accredited by trusted industry bodies.

2. ASK FOR REFERENCES

Before engaging a business or trades person, ask to speak to previous or current clients. Find out about their skill level and work ethic to ensure that they are capable of performing the job.

3. GET A SOLID QUOTE

Request a detailed quote. This will ensure good communication and avoiding the likelihood of future disputes. Ensure the quote includes the contractor's ABN or license number.

4. SHOP AROUND

Source quotes from two to three contractors, especially for bigger jobs. Expect an average hourly rate of between \$60 to \$90 per hour.

5. GET THAT CONTRACT IN WRITING!

It's one thing to have a quote, but ensure you have it in writing. A detailed contract makes it more likely that the job will be completed as described, on budget and on time.

DID YOU KNOW?

We have an online directory where you can find an even wider selection of local tradies you can rely on.



THE Trade & Services Directory



Scarborough Pest Control
INCLUDING TERMITES
QBCC #15047832

**SCARBOROUGH
PEST CONTROL**

📍 191 Ashmole Rd,
Newport

☎ (07) 3203 8378

🌐 scarboroughpest.com.au

KITCHEN WORKZ
DESIGN MANUFACTURE INSTALLATION

**KITCHEN WORKZ
QLD P/L**

📍 6 Filmer St,
Clontarf

☎ (07) 3284 4891

🌐 kitchenworkz.com.au



TOYS MUFFLER

📍 Cnr Oxley Ave
& Gomersall St,
Redcliffe

☎ (07) 3284 9722

🌐 toysmuffler.com.au



**PLUMBER &
RENO RAT**

📍 1/47 Sunnyside Rd,
Scarborough

☎ 0474 431 412

🌐 plumberandrenorat.com.au



ALL TREE & PALM

📍 11 Glenloc St,
Redcliffe

☎ 0437 814 967

🌐 alltreeandpalm.com.au



STEVIE REDBACK

📍 4/65-67 Snook St,
Clontarf

☎ 1300 665 665

🌐 stevieredback.com

**D & B ROOF REPAIRS
& RESTORATION**

🌐 dbroofrepairs.com.au

**WES HULL
PAINTERS**

🌐 painter.weshull.com.au

**CROWN POOLS
& SPAS**

🌐 crownpools.com.au

**ROAD RAGE
INDUSTRIES**

🌐 roadrageindustries.com.au

**JT HOLLOWS
CONSTRUCTION**

🌐 jthollowsconstructions.com.au

**TRADELINK
PLUMBING**

🌐 tradelink.com.au

**CETNAJ
REDCLIFFE**

🌐 cetnaj.com.au

**HONEY I SCRATCHED
THE CAR**

🌐 honeyiscratchedthecar.com.au

**DAVID WRIGHT
DEMOLITION**

🌐 davidwrightdemolition.com.au

**REDCLIFFE
SMASH REPAIR**

🌐 redcliffesmashrepairs.com.au

**BITUMEN
CONSTRUCTIONS**

🌐 bitumenconstructions.com.au

**TRADETTES
GROUP**

🌐 tradettes.com.au

The Savoy Designed for Building Memories

The Savoy 40 by Porter Davis Homes is the epitome of contemporary design. On display at Stockland's Newport Estate, this home is inspired by the sleek sophistication of Hollywood Hills.

Think of large polished tiles, terrazzo finishes and wide-open spaces. Think James Dean, Dean Martin and Marilyn Monroe. This is where style was born.

Ultra-modern and vogueish, the Long Beach facade will capture your gaze and hint at the superior design to come. Inside, follow the warm chevron timber floor through a wide entry way and past the open study and lounge. The dining room is met by a remarkable double storey void that grants permission for natural light to illuminate the home.

An entertainer's dream, the kitchen wraps delicately around the edge of the alfresco with a separate galley and walk-in-pantry, perfect for keeping any party messes your little secret. Opening the oversized windows and boutique sliding doors is all that is needed to invite the outdoors in to enjoy those warm Queensland evenings.

Upstairs, an impressive master suite is serviced by an oversized walk in robe and ensuite with private balcony. Three remaining bedrooms and a generous games room allow space for the family to come together or enjoy an escape.

The Savoy is a home designed for building memories. Experience the best in superior design, style and quality from Porter Davis Homes at Newport Estate.



PORTER
DAVIS
HOMES

**The home of
superior design,
style & quality.**

Visit the **Savoy 40** with Long Beach
façade on display at **Newport Estate**.

porterdavis.com.au



WANT TO LOOK FOR YOURSELF?

Visit the Savoy 40 display home at Stockland's Newport Estate.
Open 7 days - 10am-5pm.

Contact: (07) 2101 3802 | **Where:** 6-8 Rani St, Newport

porterdavis.com.au



GRIND

COFFEE BAR

Shining a light on our BEAUTIFUL BLEND

At Grind Coffee Bar, we pride ourselves on using only the best, most ethically sourced and environmentally sustainable beans. Straight from Tim Adams Specialty Coffee, located on the beautiful Sunshine Coast, who works directly with farmers to produce the best quality crops for a fair price.

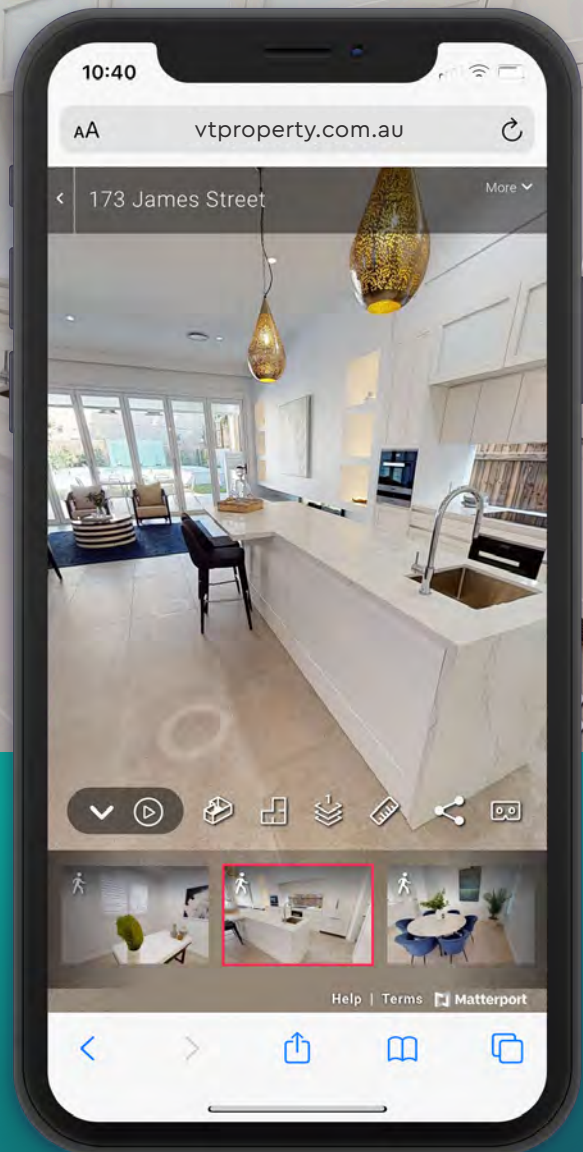
Come in and try our delightful, full-bodied Chapola blend (consisting of beans from Ethiopia, Brazil and Columbia) with one of our eight milk options today.

We guarantee you'll taste the difference!





virtualtours
AUSTRALIA



↑ **4-9%
Sales
Price***

**WITH VIRTUAL
OPEN HOMES 24/7**

Open your property to
5 times more potential
buyers than physical
open homes alone.

Source: Results from two separate studies indicate that listings with a Matterport 3D virtual walkthrough sell for a higher price and can spend less time on market than homes listed using a traditional marketing package. <https://matterport.com/blog/3d-tours-properties-sell-31-faster-and-higher-price>

\$299 incl. GST.

- ✓ A superior virtual tour for up to 500sqm (incl. commercial properties)
- ✓ 2D floor plan included
- ✓ Up to 8 captured still images through our VT technology

- ✓ Up to 10 **mattertags** – highlight areas of interest throughout the tour

Tour example:



vtproperty.com.au

Luke HOWARTH

Your Federal MP



Need Luke's help?
Scan the QR code
to get in touch



Luke HOWARTH MP

Federal Member for **Petrie**
Assistant Minister for **Youth & Employment Services**

🏠 40 Hornibrook Esplanade, Clontarf QLD 4019

☎ 07 3284 8008 ✉ Luke.Howarth.MP@aph.gov.au

🌐 lukehowarth.com.au 📘 [LukeHowarthMP](https://www.facebook.com/LukeHowarthMP)

Authorised by L. Howarth, LNP QLD, Clontarf QLD 4019.



WILLS

ESTATE LITIGATION

**DECEASED ESTATE –
PROBATE & ADMINISTRATION**

For a better result
call 3883-3700

rblawyers.com.au



virtualtours
AUSTRALIA



Easier, better, faster virtual
property inspections... right in
peoples' pockets.

We specialise in virtual tours for residential and
commercial property so you can achieve the
superior results you're desiring.

Get that property seen anywhere, anytime, and
in the easiest, better and fastest way possible.

Book now – we'll do the rest!

vtproperty.com.au

GreenShots
REAL ESTATE PHOTOGRAPHY



Don't leave your next booking to
chance. Increase your property's
appeal, sell the dream, and get
more bookings!

Shirlee is a trusted professional, specialising in
still photography, floor plans, virtual staging and
styling photography that will make your property
"pop". Offering a fast turnaround to get your
listing online, active and available ASAP. Get in
touch with Shirlee today and see what difference
means for you.

greenshots.com.au



Creating Beautiful 'Cosmetic
Tattoo' Transformations.

Johnelle works with the client to deliver beautiful
cosmetic tattooing that looks and feels natural.

Quality should never be a compromise. From the
outset of our treatments, we will work closely
with our client to ensure that the quality and the
expected outcomes align. We are committed to
ensuring you look and feel great and maintain
your healthy, beautiful look!

alchemycosmetica.com.au



**“Our property market
is hot right now!”**



**What is your
property worth?**



Free property
appraisal report
within 24hours

**Scan the QR code
or call us today**

0410 026 766

 35 Redcliffe Parade, Redcliffe 4020